

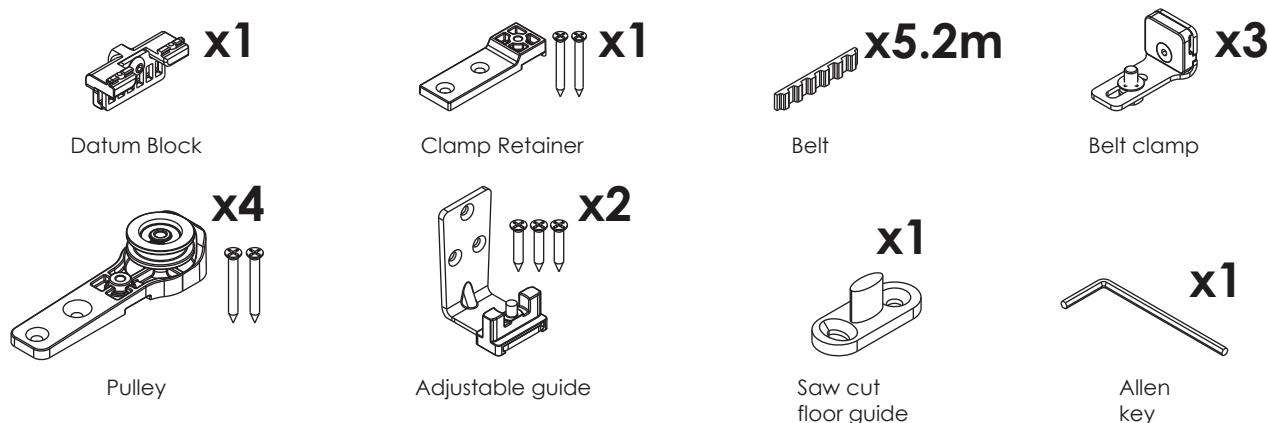
Brio[®] Telescopic Accessory Kit - 3 Panel

Brio NZ
P: 0800 477 869
W: brionz.com
E: nzinfo@allegion.com

Brio Australia
P: 1800 098 094
W: brio.com.au
E: info.au@allegion.com

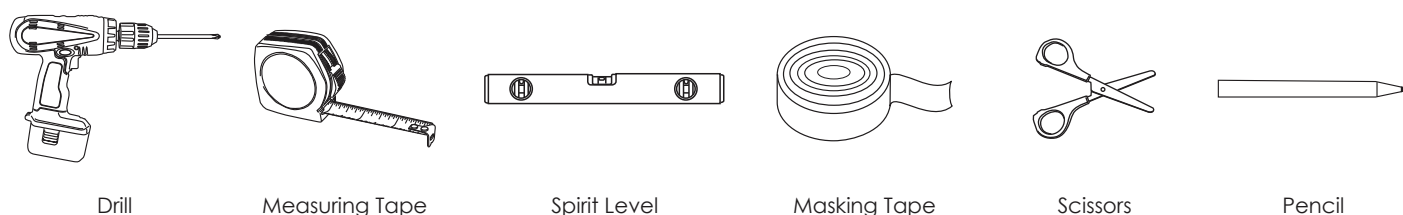
Brio UK
P: +44 (0)330 8080 617
W: briouk.com
E: brio.sales.uk@allegion.com

Kit components

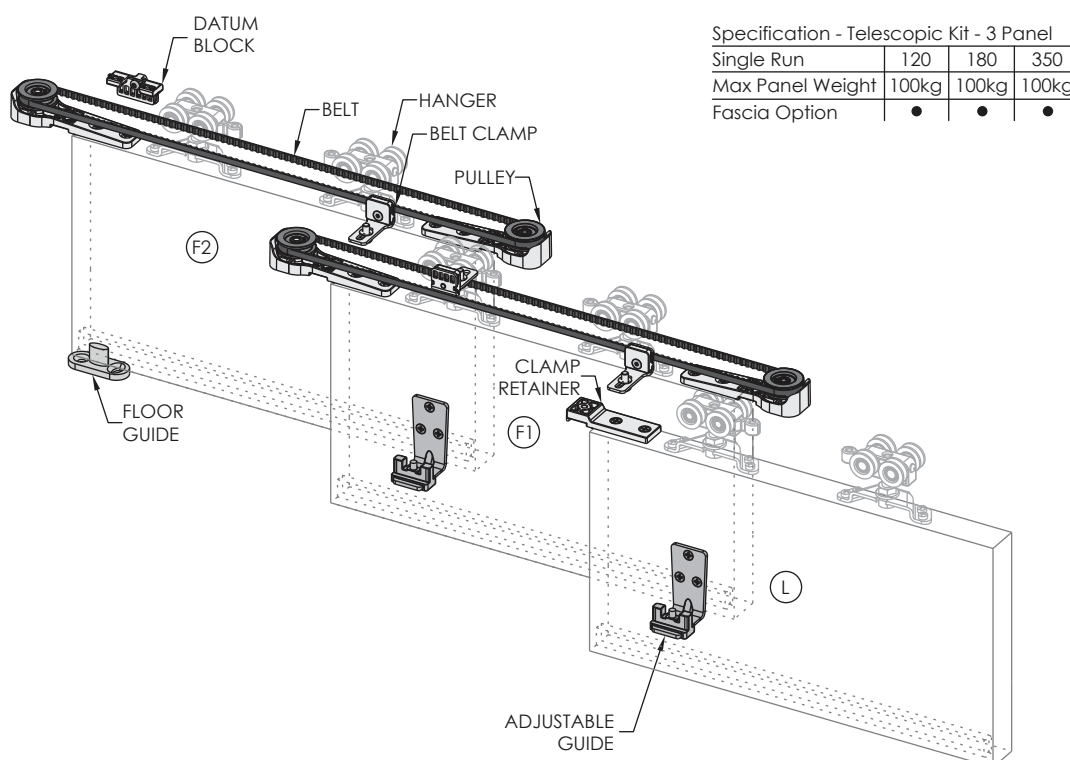


Note: Door stops available separately, dependent on the Single Run system used

Tools



Kit Overview



Specification - Telescopic Kit - 3 Panel

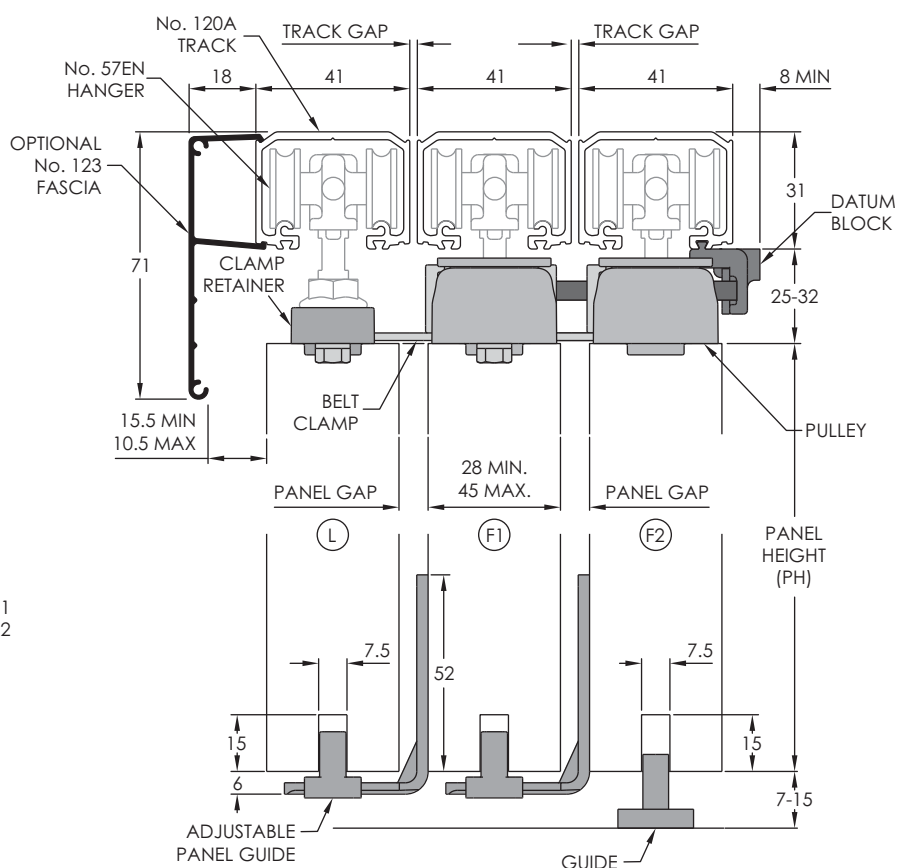
Single Run	120	180	350
Max Panel Weight	100kg	100kg	100kg
Fascia Option	•	•	•

KEY:
L = LEAD PANEL
F1 = FOLLOWER PANEL 1
F2 = FOLLOWER PANEL 2

System Overview

Single Run 120

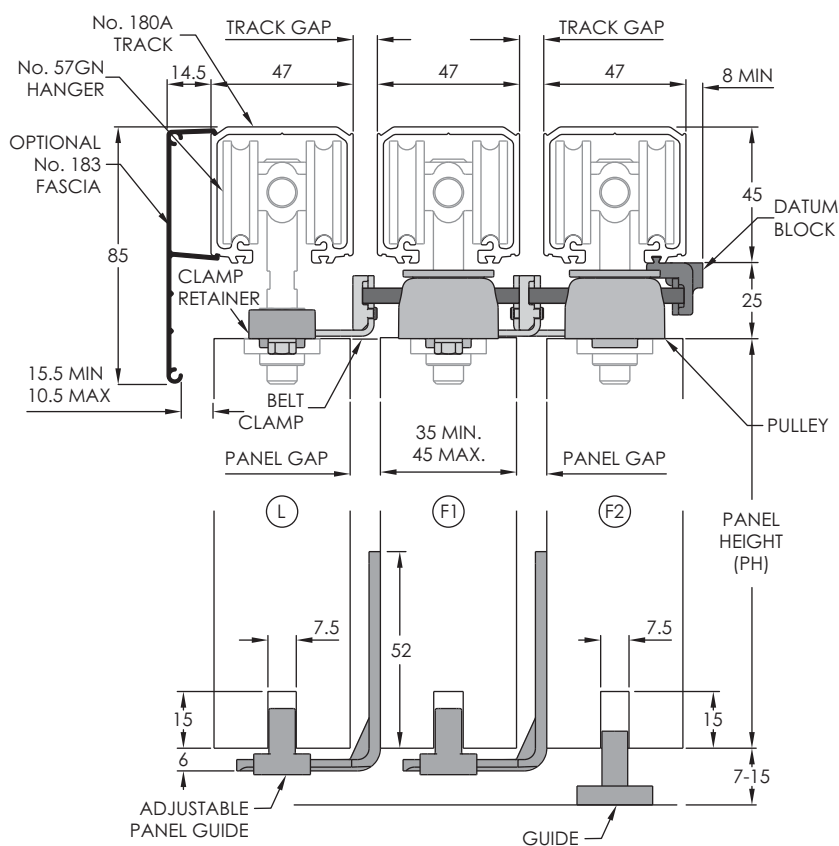
PANEL THICKNESS	28	35	38	40	45
TRACK GAP	0	2	5	8	12
PANEL GAP	12.7	7.7	7.7	8.7	7.7



KEY:
L = LEAD PANEL
F1 = FOLLOWER PANEL 1
F2 = FOLLOWER PANEL 2

Single Run 180

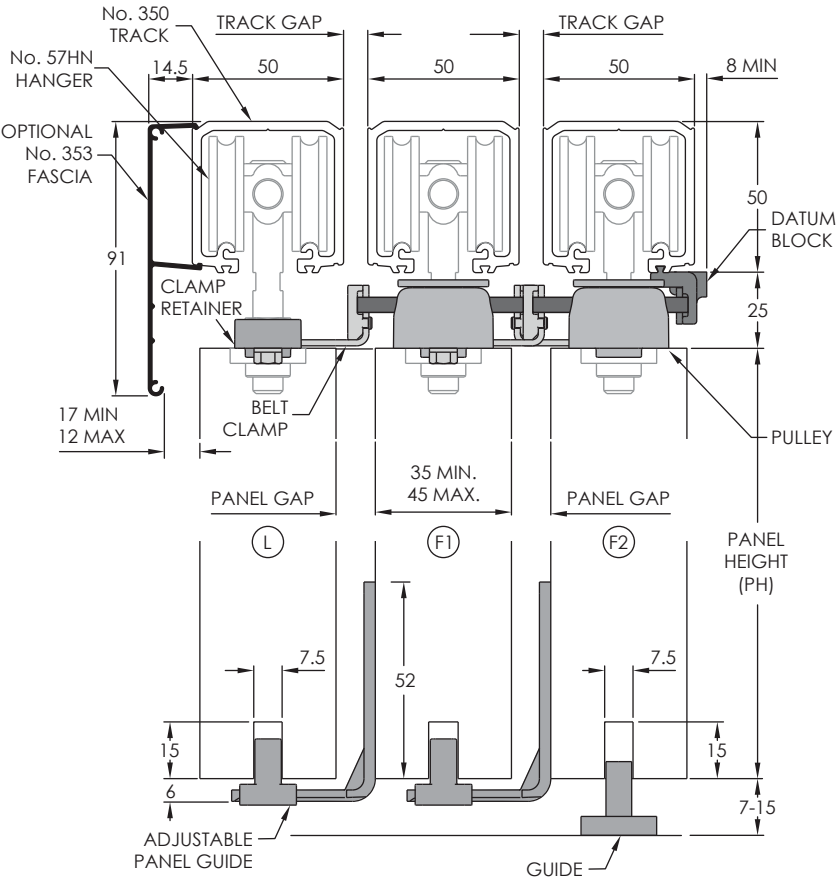
PANEL THICKNESS	35	38	40	45
TRACK GAP	0	0	1	7
PANEL GAP	12	9	8	8



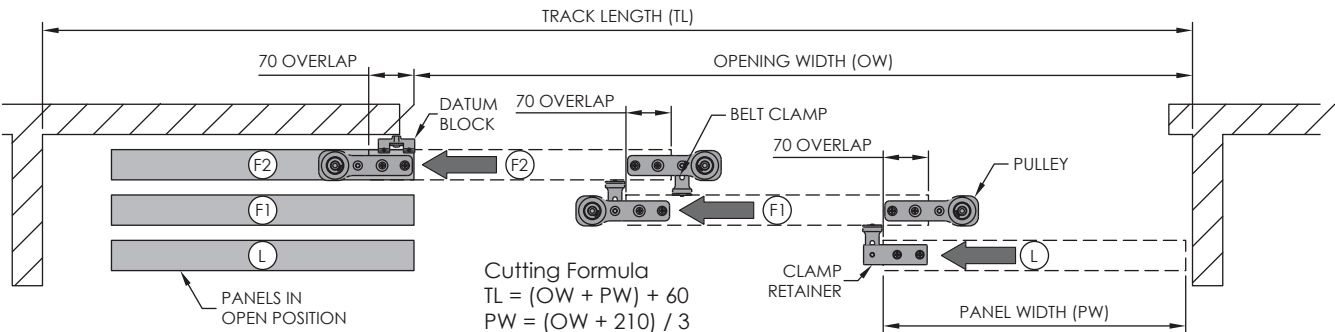
KEY:
L = LEAD PANEL
F1 = FOLLOWER PANEL 1
F2 = FOLLOWER PANEL 2

Single Run 350

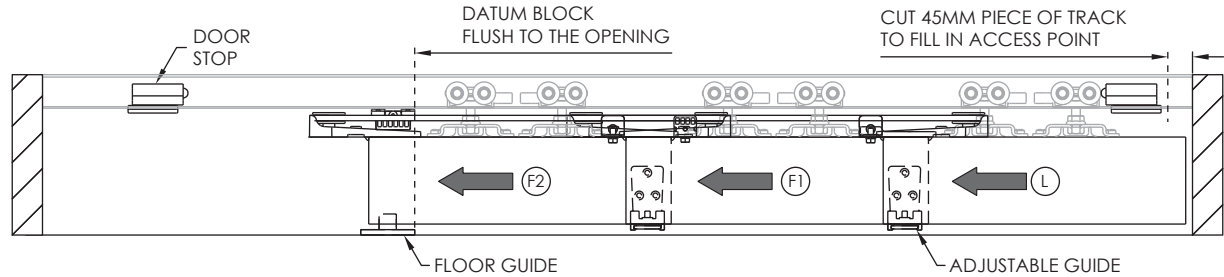
PANEL THICKNESS	35	38	40	45
TRACK GAP	0	0	0	3
PANEL GAP	15	12	10	8



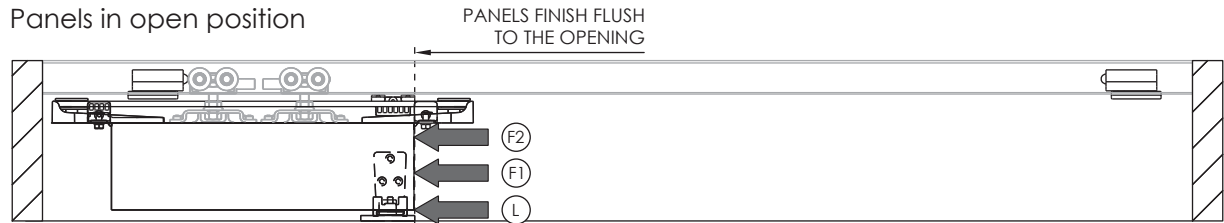
KEY:
L = LEAD PANEL
F1 = FOLLOWER PANEL 1
F2 = FOLLOWER PANEL 2



Panels in closed position

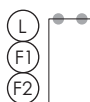
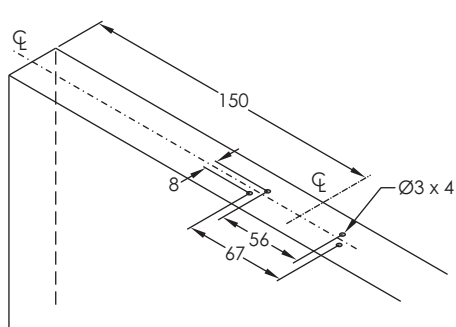


Panels in open position

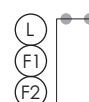
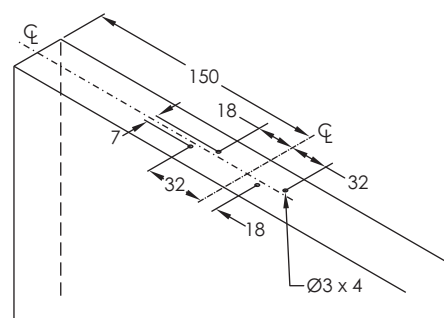


Panel Preparation

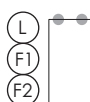
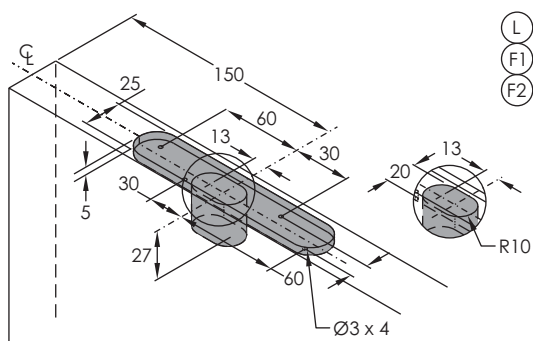
Hangers
57ENP
57DN



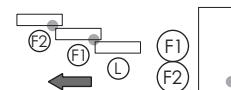
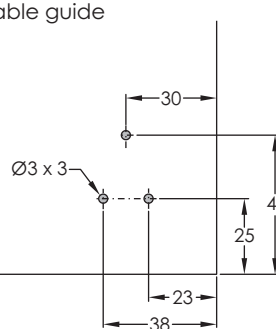
Hangers
57EN



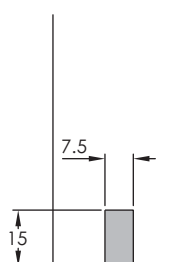
Hangers
57GN
57HN



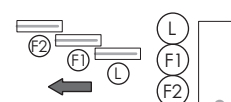
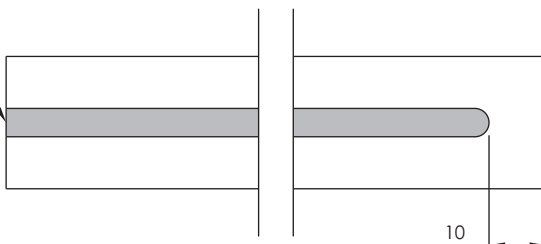
Adjustable guide



Guide groove

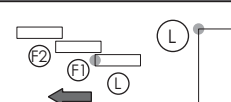
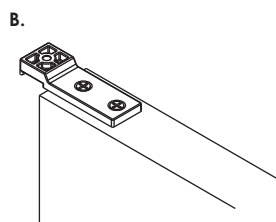
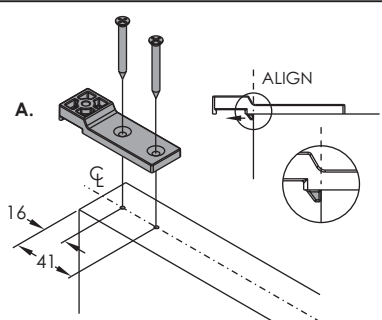


OPEN END
TO FEED
GUIDES

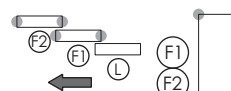
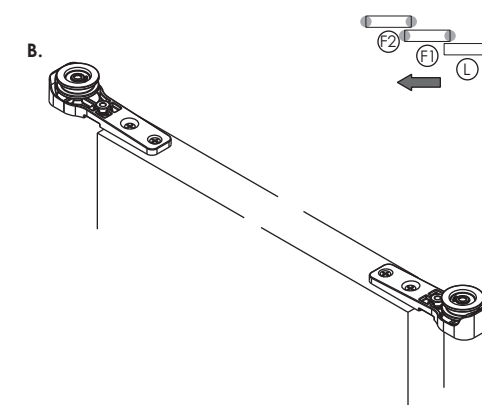
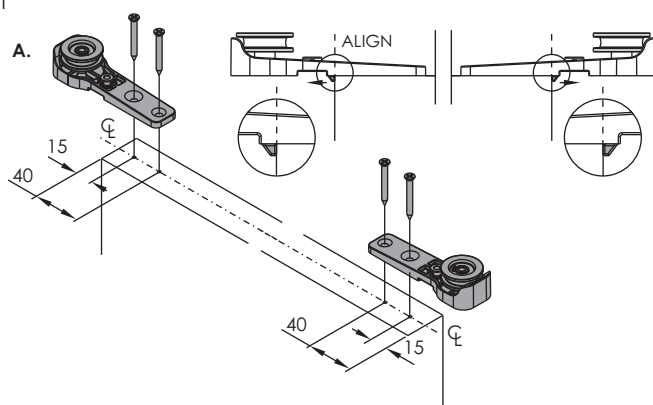


Telescopic Hardware Install

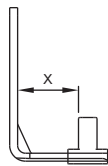
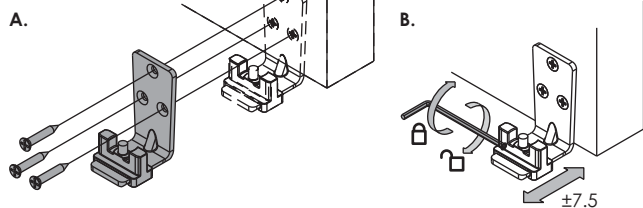
Clamp Retainer



Pulley bracket

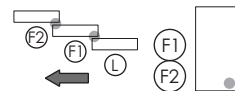


Adjustable Guide

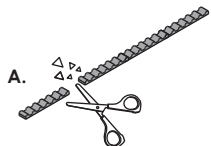


ADJUSTMENT DIMENSION (x)

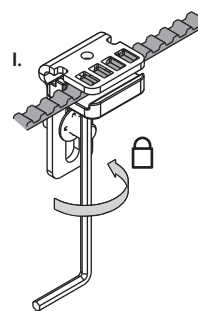
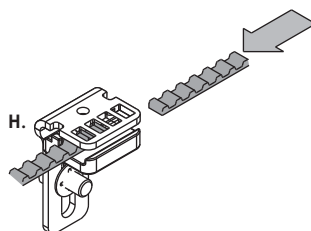
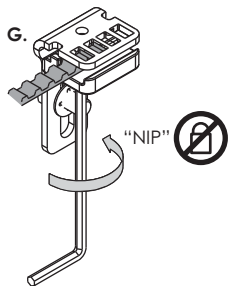
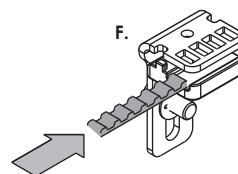
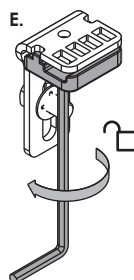
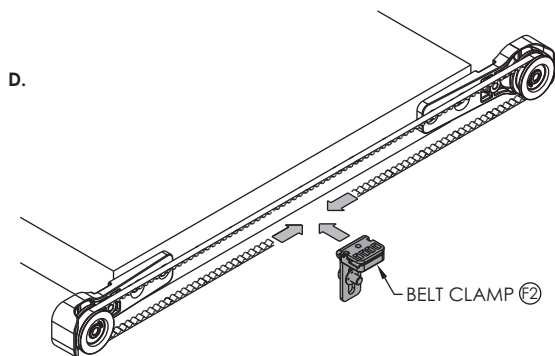
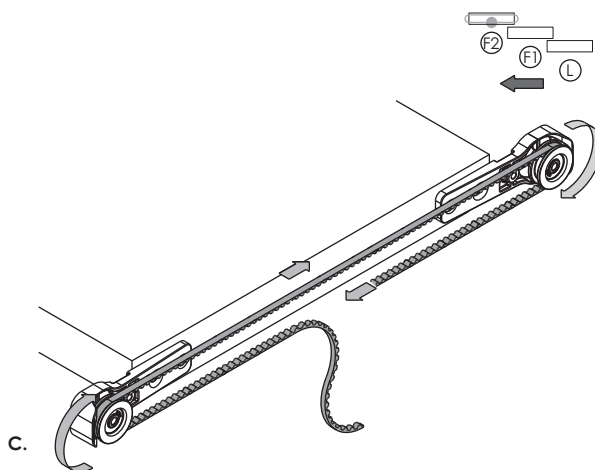
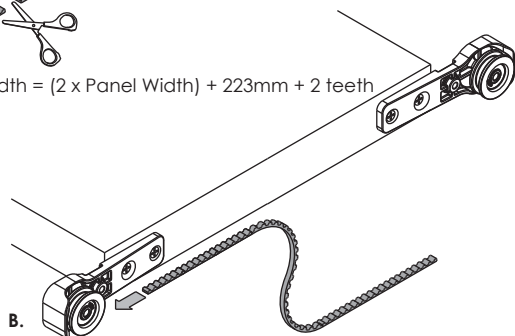
	PANEL THICKNESS	28	35	38	40	45
SYSTEM USED	SINGLE RUN 120	20.2	18.7	20.2	22.2	23.7
	SINGLE RUN 180	-	23	25.5	21.5	24
	SINGLE RUN 350	-	26	24.5	23.5	23



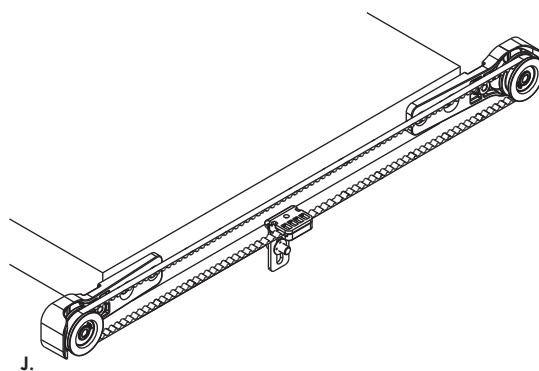
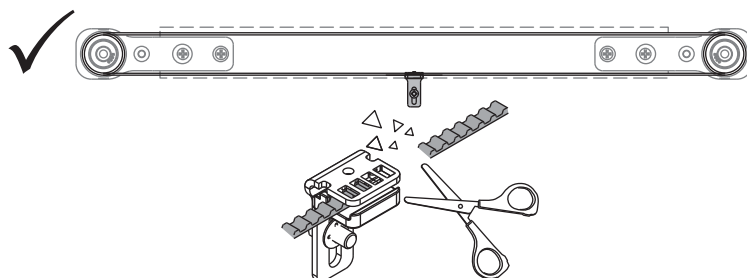
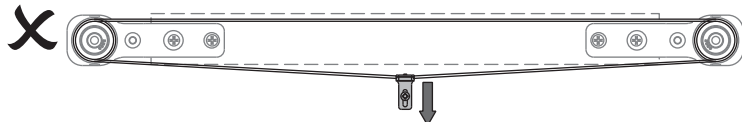
Belt and Belt Clamp - F2



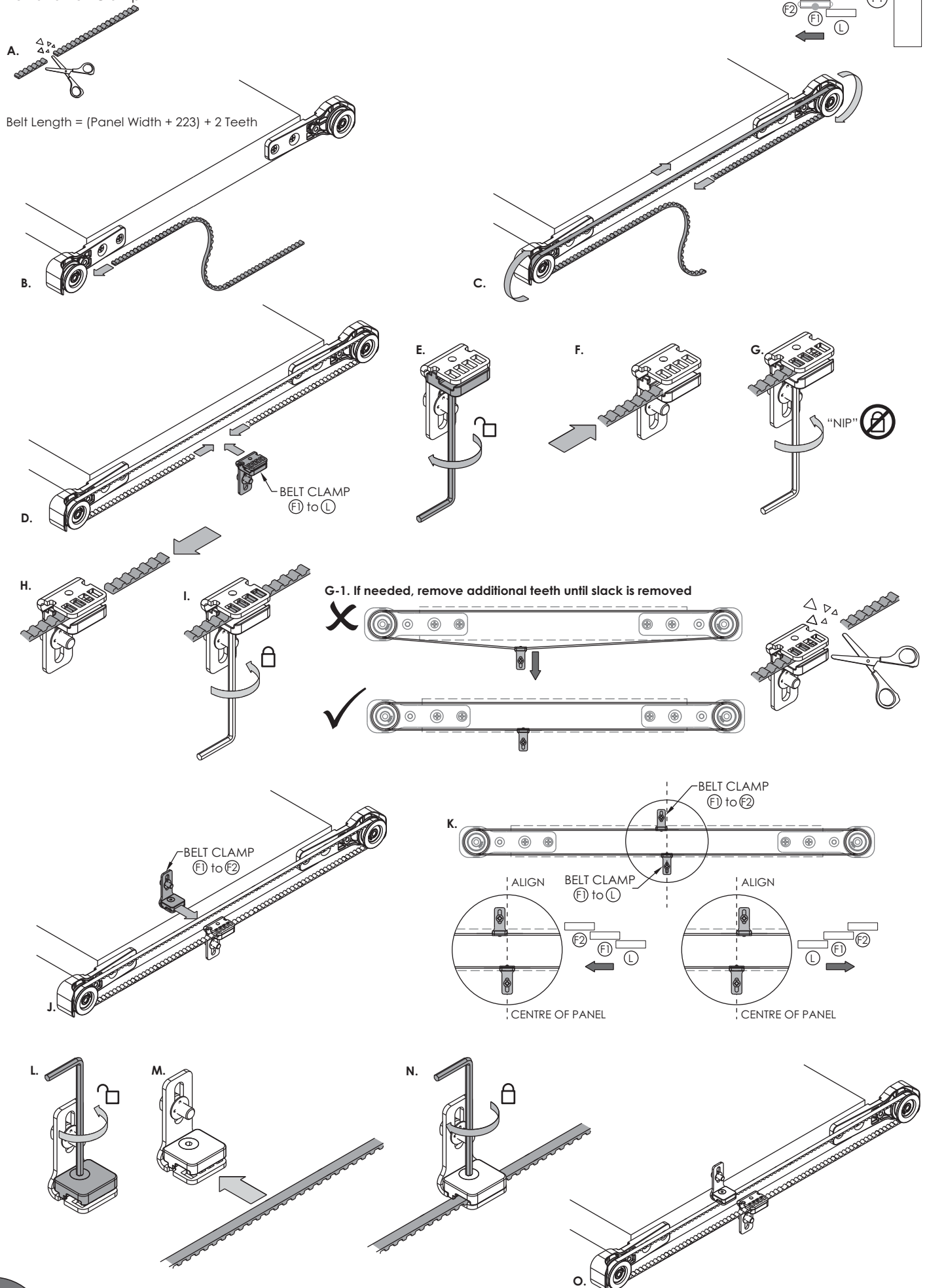
Belt Width = (2 x Panel Width) + 223mm + 2 teeth



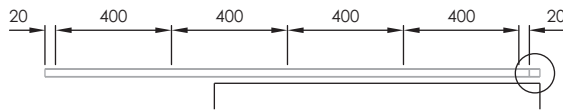
G-1. If needed, remove additional teeth until slack is removed



Belt and Belt Clamp - F1

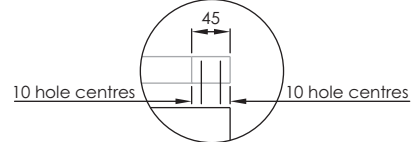


Track fixing centres



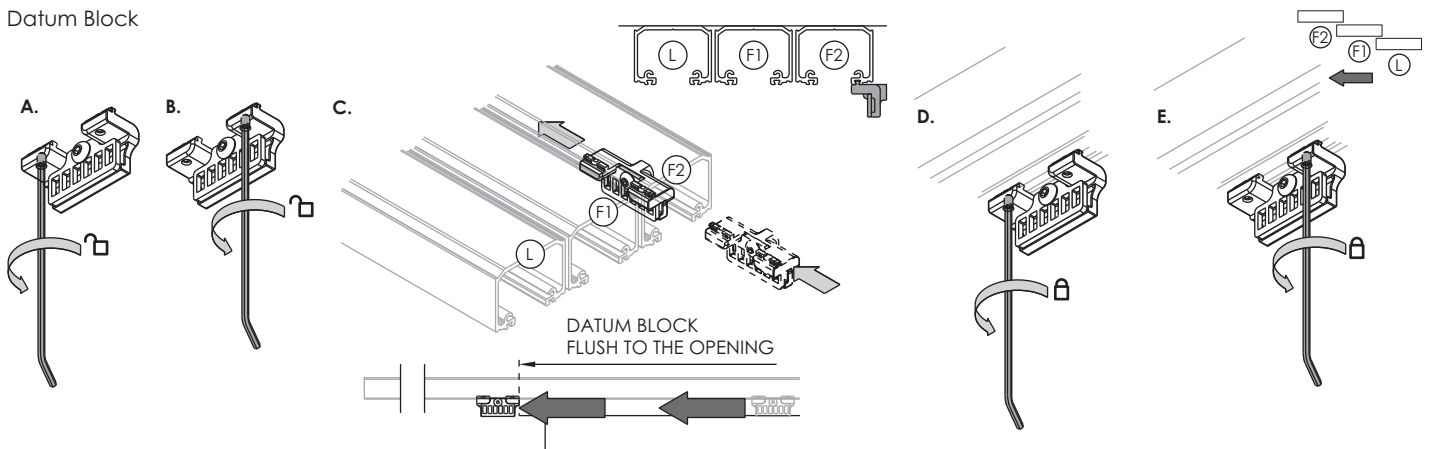
Refer to Single run instructions for other track mounting options

Access track section

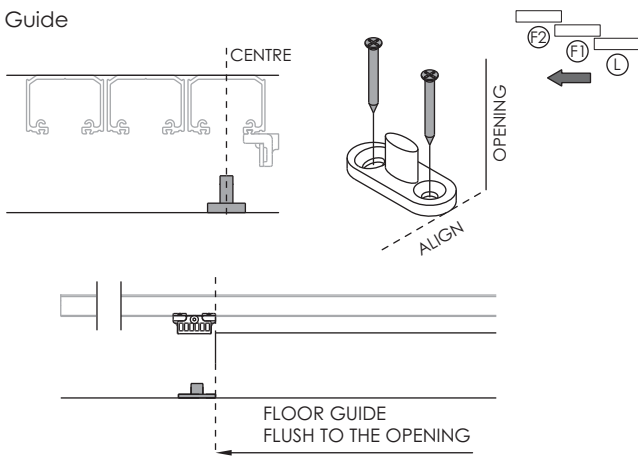


Fitted after system has been installed

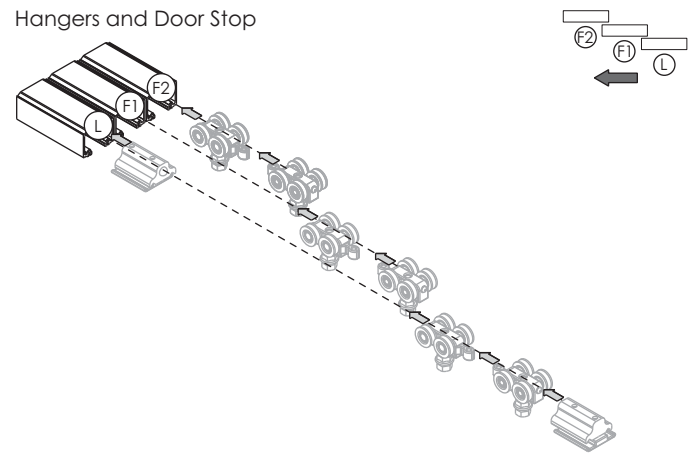
Datum Block



Floor Guide

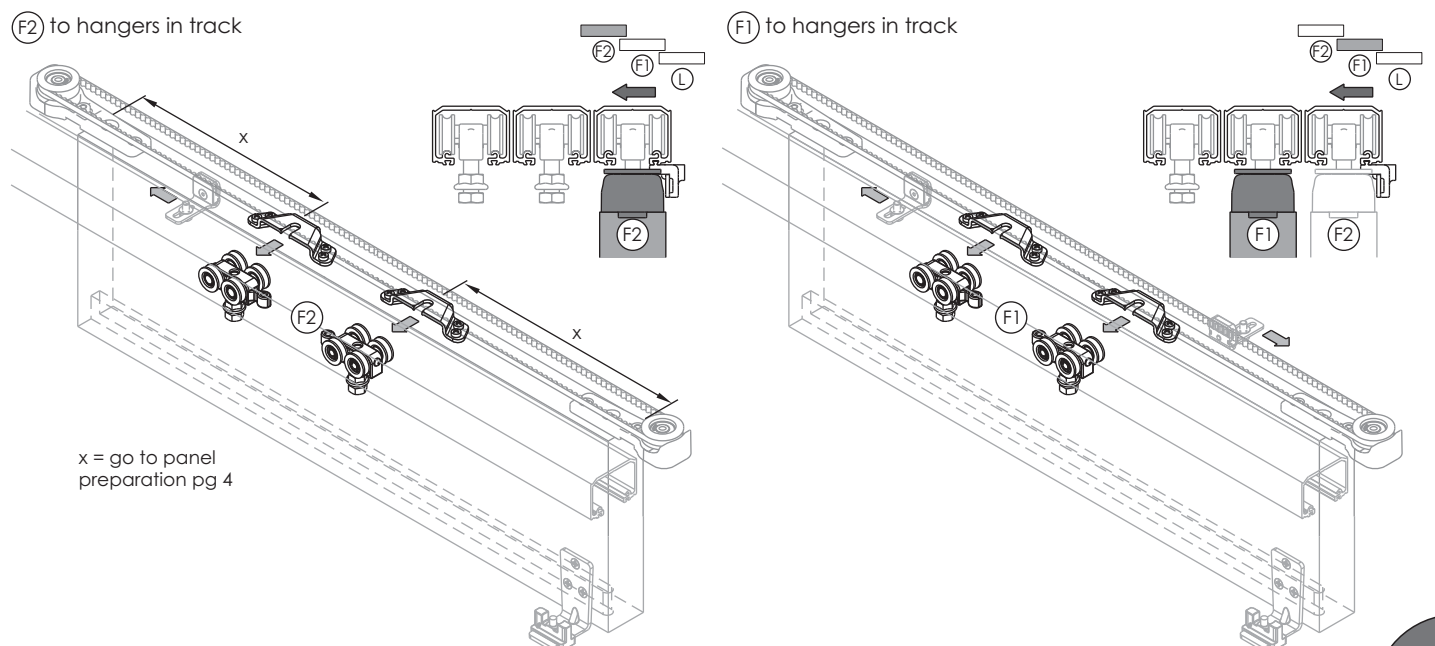


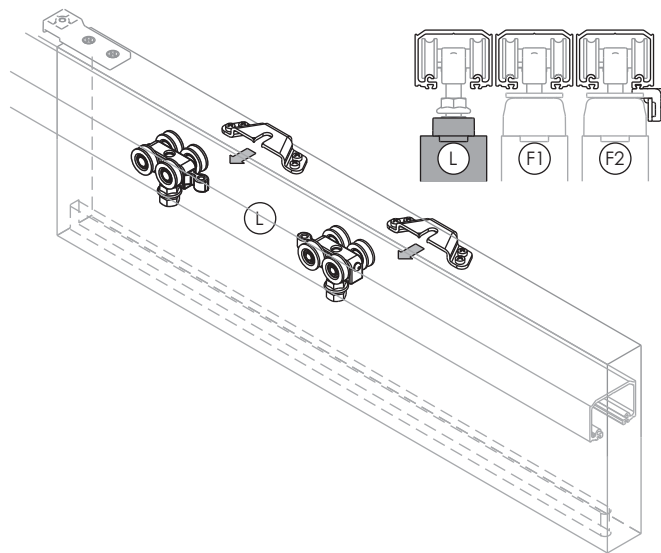
Hangers and Door Stop



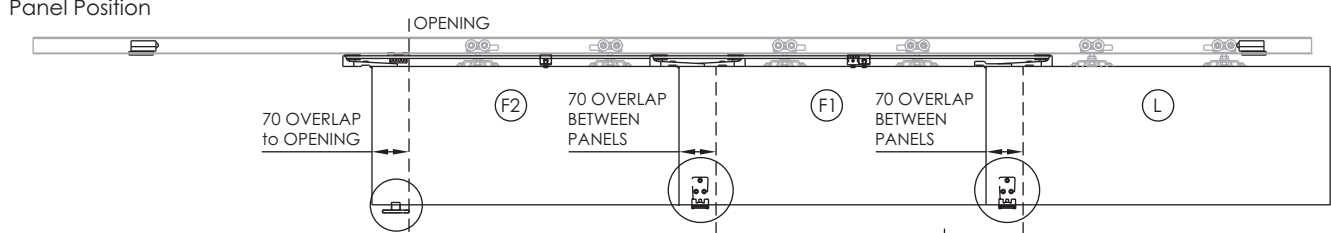
Panel Installation

Refer to specific Single Run installation instructions for mounting hangers correctly

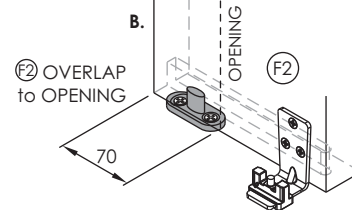
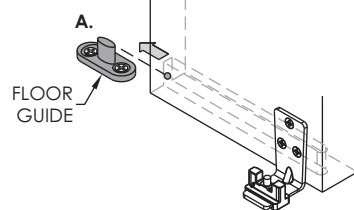




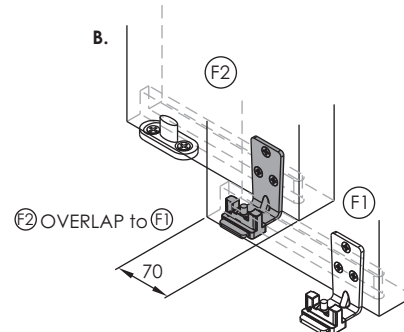
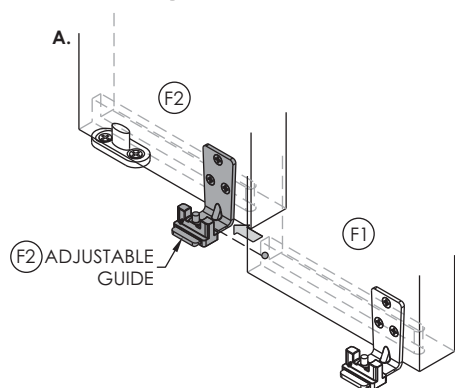
Panel Position



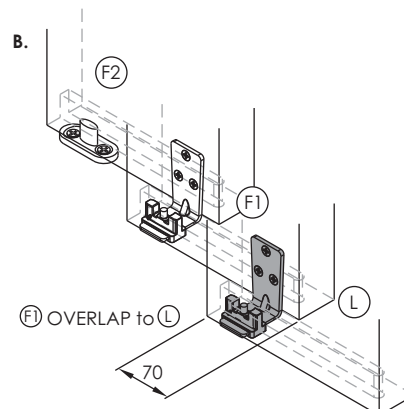
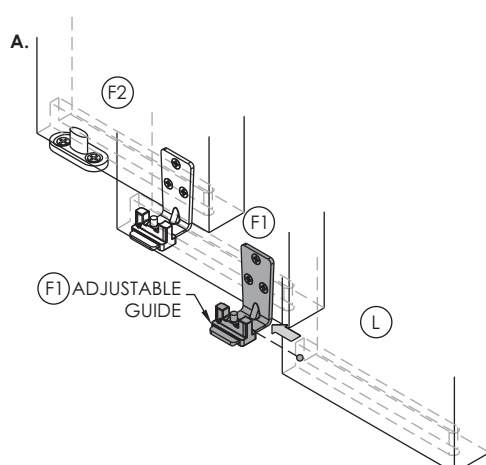
(F2) to Floor Guide



(F2) Adjustable Guide to (F1)

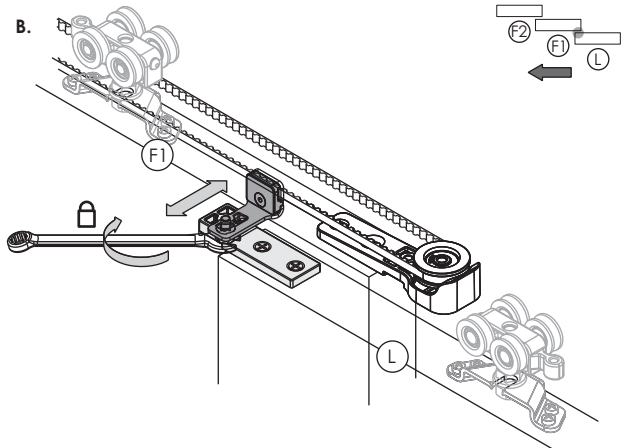
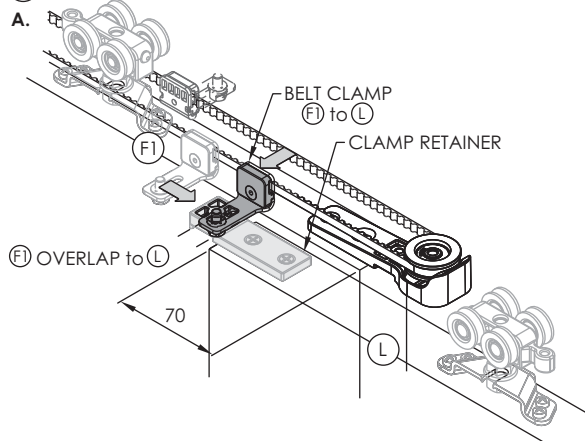


(F1) Adjustable Guide to (L)

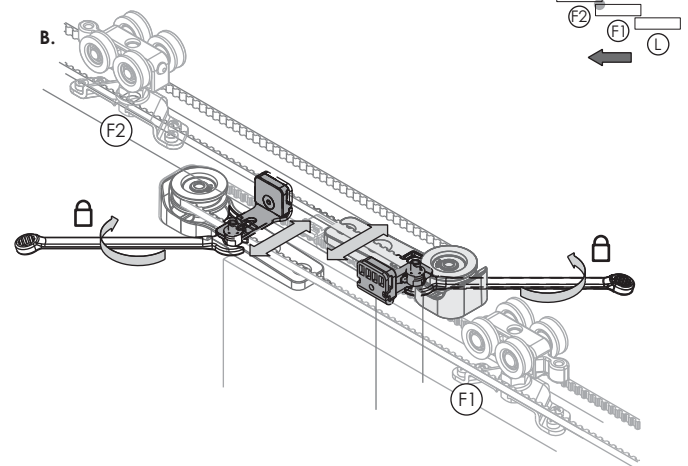
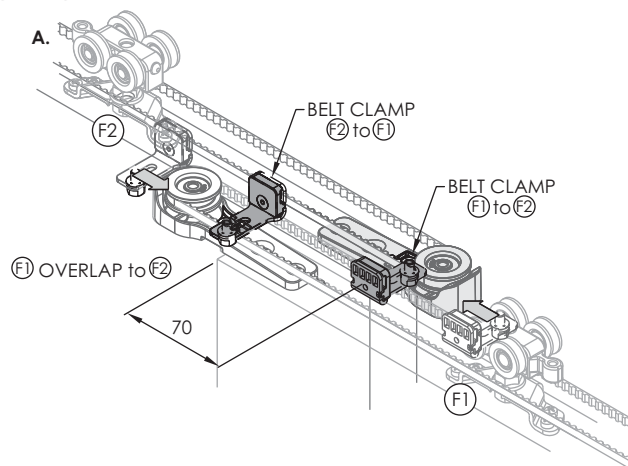


Connecting Panels

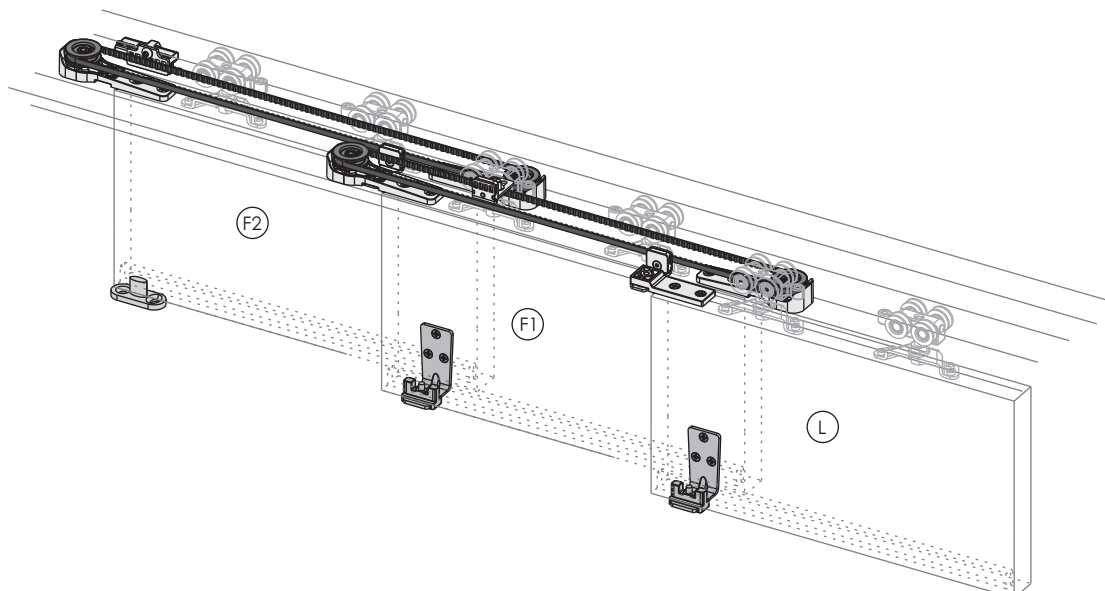
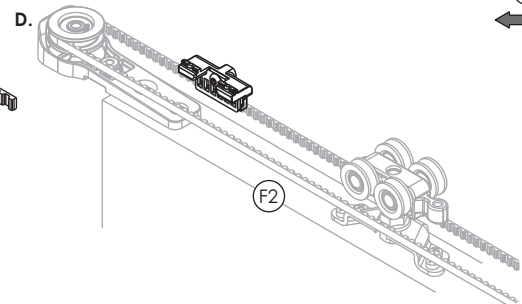
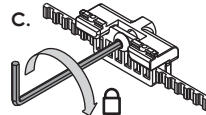
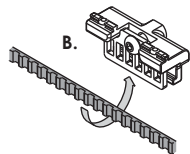
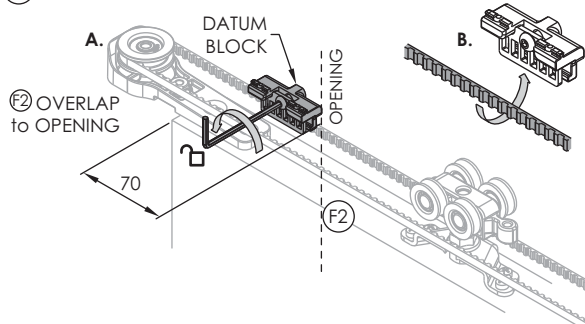
L to F1



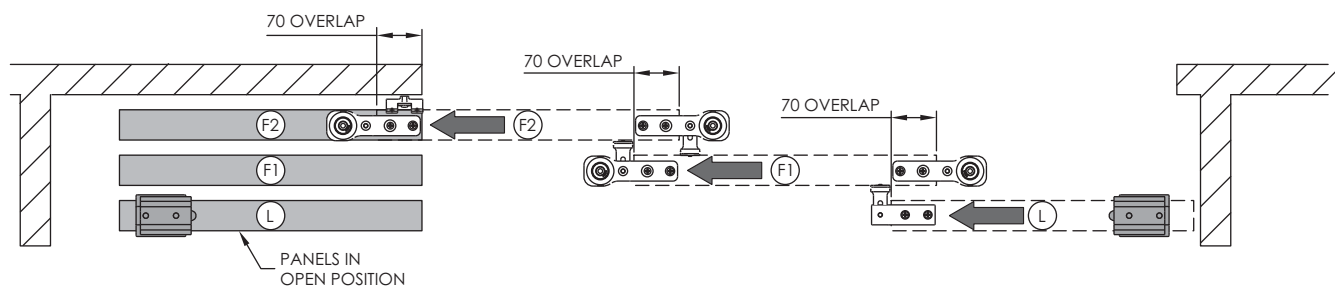
F1 to F2



F2 to Datum Block



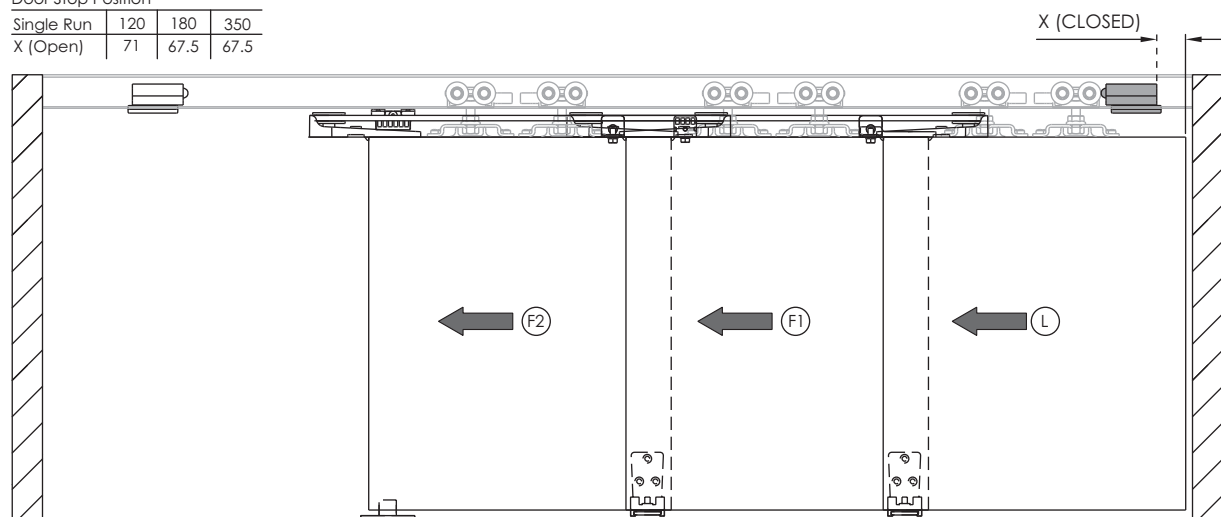
Door Stops - Position and Lock - **only needed for L panel**



Panels in the closed position

Door Stop Position

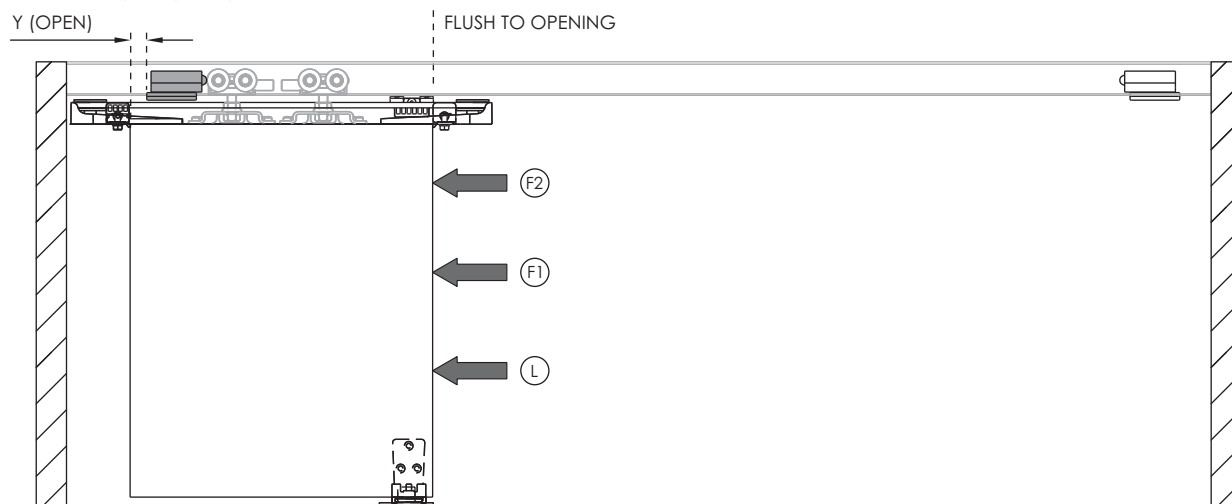
Single Run	120	180	350
X (Open)	71	67.5	67.5



Panels in the open position

Door Stop Position

Single Run	120	180	350
Y (Closed)	71	67.5	67.5



Install access track

